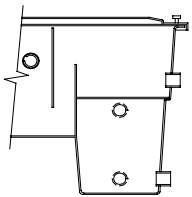


Model	Dimensions			Elevations			Fitting Sizes					Weight (Lbs)		Media Ft <sup>2</sup>	Tank Vol. Gal.	Effluent Vol. Gal.	Oil Vol. Gal.	Sludge Gal.	GPM
	A	B	C	D	E	F	G	H	I	J	K	Dry	Full						
ROS2	5'-2"	1'-5"	2'-7"	2'-0"	1'-8"	1'-11"	2"	2"	2"	2"	2"	95	460	136	25	4	8	7	5
ROS4	5'-2"	2'-5"	2'-7"	2'-0"	1'-8"	1'-11"	2"	2"	2"	2"	2"	135	980	272	51	10	25	13	10
ROS8	6'-0"	2'-5"	3'-7"	3'-0"	2'-4"	3'-0"	2"	2"	2"	2"	2"	180	1900	544	125	15	40	13	25
ROS12	6'-0"	3'-4"	3'-7"	3'-0"	2'-4"	3'-0"	3"	3"	3"	2"	2"	350	2775	816	180	25	60	25	36
ROS16	6'-0"	4'-4"	3'-7"	3'-0"	2'-4"	3'-0"	3"	3"	3"	2"	2"	460	3800	1088	240	35	80	37	50

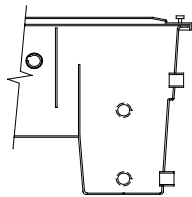
Item	QTY	Description	Item	QTY	Description	Item	QTY	Description	Item	QTY	Description	Item	QTY	Description
1	1	Inlet	4	2	Sludge Out	7	1	Inlet Chamber	10	1	Water Weir	13	1	Oil Storage
2	1	Outlet	5	2	Oil Outlet	8	1	Flopak Media	11	1	Oil Baffle	14	1	Sludge Hopper
3	1	Oil Outlet	6	1	Inlet Diffuser	9	1	Sep. Chamber	12	1	Outlet Chamber	15	1	Cover

Information not for construction Design & dimensions may change without notice Flow rates are nominal

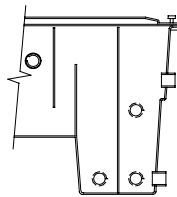
### Available Tank Configurations



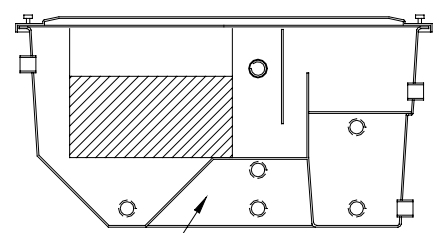
Oil reservoir is a standard design feature



Effluent chamber is combined with oil reservoir for direct effluent pumpout



Effluent & oil chambers are vertically split.



Secondary oil / water reservoir

Skimoil can provide your separator in many custom configurations with many options to fit your project. Please contact us to discuss your needs and quote your configuration.